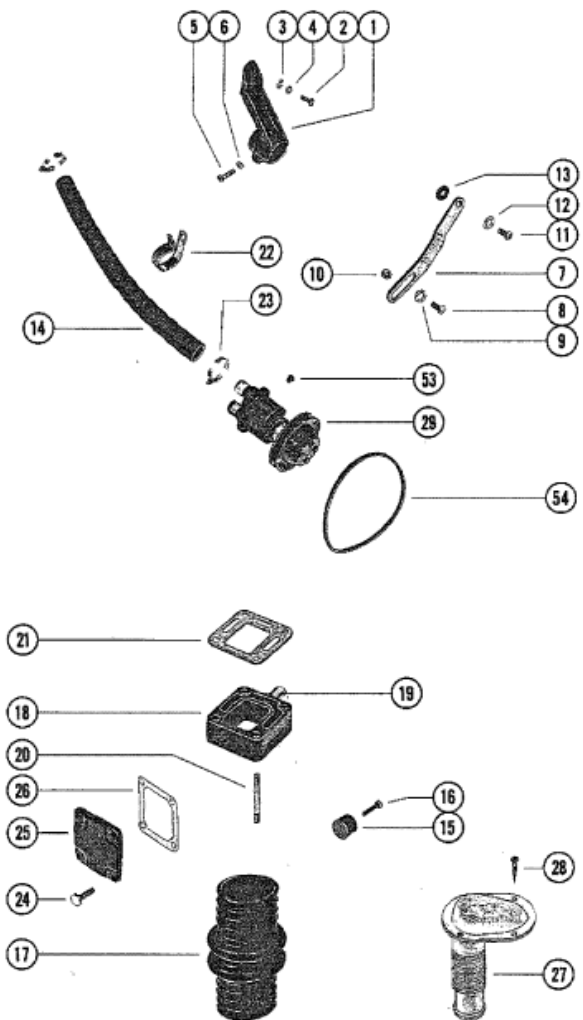
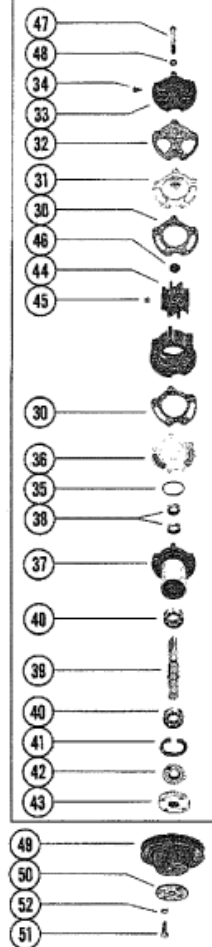


BREAKDOWN OF WATER PUMP



| | | | | Parts List | | |
|-----|-------|--------|-------------------------------|------------|---------|----------|
| Ref | Class | Part | Description | Qty | Comment | Footnote |
| - | - | 77518A | 1 INSTALLATION KIT, FRESH WAT | 1 | | |
| 1 | | 47488 | BRACKET, WATER PUMP | 1 | | |
| 2 | 10 | 34353 | SCREW, WATER PUMP BRACK | 2 | | |
| 3 | 12 | 20553 | WASHER, WATER PUMP BRAC | 1 | | |
| 4 | 13 | 35048 | LOCKWASHER, WATER PUMI | 2 | | |
| 5 | 10 | 34354 | SCREW, CLAMPING - WATER I | 1 | | |
| 6 | 13 | 35048 | LOCKWASHER, WATER PUMP | 1 | | |
| 7 | | 71648 | BRACE, WATER PUMP | 1 | | |
| 8 | 10 | 35786 | SCREW, WATER PUMP BRACE T | 1 | | |
| 9 | 13 | 37459 | LOCKWASHER, WATER PUMP B | 1 | | |
| 10 | 11 | 24883 | NUT, WATER PUMP BRACE TO E | 1 | | |
| 11 | 10 | 37612 | SCREW, BRACE TO ENGINE (1 | 1 | | |
| 12 | 13 | 35048 | LOCKWASHER | 1 | | |
| 13 | 23 | 72057 | SPACER | 1 | | |
| 14 | 32 | 49044 | HOSE, WATER PUMP TO THERM | 1 | | |
| 15 | | 32877 | COVER, WATER STOP - GIMBAL | 1 | | |
| 16 | 10 | 53556 | SCREW, WATER STOP COVER F | 2 | | |
| 17 | | 72408 | BELLOWS, EXHAUST ELBOW | 2 | | |
| 18 | | 61937A | 1 WATER DISTRIBUTION HOUSINI | 2 | | |
| 19 | 23 | 52020 | SLEEVE, WATER DISTRIBUTIO | 2 | | |
| 20 | 16 | 52988 | STUD, EXHAUST MANIFOLD TO | 8 | | |
| 21 | 27 | 52076 | GASKET, EXHAUST MANIFOLE T | 4 | | |
| 22 | 54 | 47715 | CLIP, HOSE ATTACHING | 1 | | |
| 23 | 54 | 32780 | CLAMP, HOSE TO WATER PUMP | 2 | | |
| 24 | 10 | 25299 | SCREW, END CAP ATTACHING (| 8 | | |
| 25 | | 73813A | 1 END CAP, EXHAUST MANIFOLD | 2 | | |
| 26 | 27 | 73814 | GASKET, END CAP TO XHAUST | 2 | | |
| 27 | | 68670A | 2 THRU HULL WATER INTAKE AS | 1 | | |
| 28 | 10 | 68864 | SCREW, WATER INTAKE ATTA | 4 | | |
| - | 92 | 38927 | 1 LOCTITE, CAPSULE - WATER II | 1 | | |
| 29 | 46 | 72774A | 11 WATER PUMP ASSEMBLY | 1 | | |
| 30 | 27 | 72780 | GASKET, WATER PUMP BODY | 2 | | |
| 31 | | 72777 | WEAR PLATE | 1 | | |
| 32 | 27 | 72779 | GASKET, COVER TO OUTER w | 1 | | |
| 33 | | 72776 | COVER, WATER PUMP | 1 | | |
| 34 | 10 | 28642 | SCREW, WATER PUMP DRIVE | 4 | | |
| 35 | 25 | 37340 | "O" RING, PUMP HOUSING TO | 1 | | |
| 36 | | 72778 | WEAR PLATE | 1 | | |
| 37 | 46 | 71497A | 2 PUMP HOUSING | 1 | | |
| 38 | 26 | 23300 | OIL SEAL, WATER PUMP SHA | 2 | | |
| 39 | | 68601 | SHAFT, WATER PUMP | 1 | | |